



### Legend

**Project Features\***

**Pole Type**

- Guy
- LWSP
- Riser
- TSP
- Guard Structures

Access Roads

Material Yards

**Subtransmission Route**

- Segment 1
- Segment 2
- Segment 3

**Fiber Optic Line**

- Overhead Fiber Optic Cable
- Underground Fiber Optic in Existing Conduit
- Underground Fiber Optic in New Conduit

**Drainage Control Features (90%)**

- Culvert
- Gabion
- Rip-Rap

**Impact Areas\***

- Permanent
- Temporary
- Tree Trimming Areas
- Impacted Jurisdictional Features

**MSHCP Riverine/Riparian Areas**

- Riparian
- Riverine
- Vernal Pool

**Potential Jurisdictional Waters (AMEC)**

- Waters of the U.S. and Waters of the State of California
- Wetland
- Existing Culvert

**\* Map Notes:**

- Project Features subject to change based on geotechnical investigations, final engineering, ongoing coordination with the resource agencies, and field assessments conducted prior to construction
- Map Current as of 10/9/2014

**amec**

1 inch = 50 feet

0 25 50 Feet

N

**Appendix A2 - Proposed Impacts to Riverine/Riparian Areas**

**MSHCP Biological Resources Technical Report**

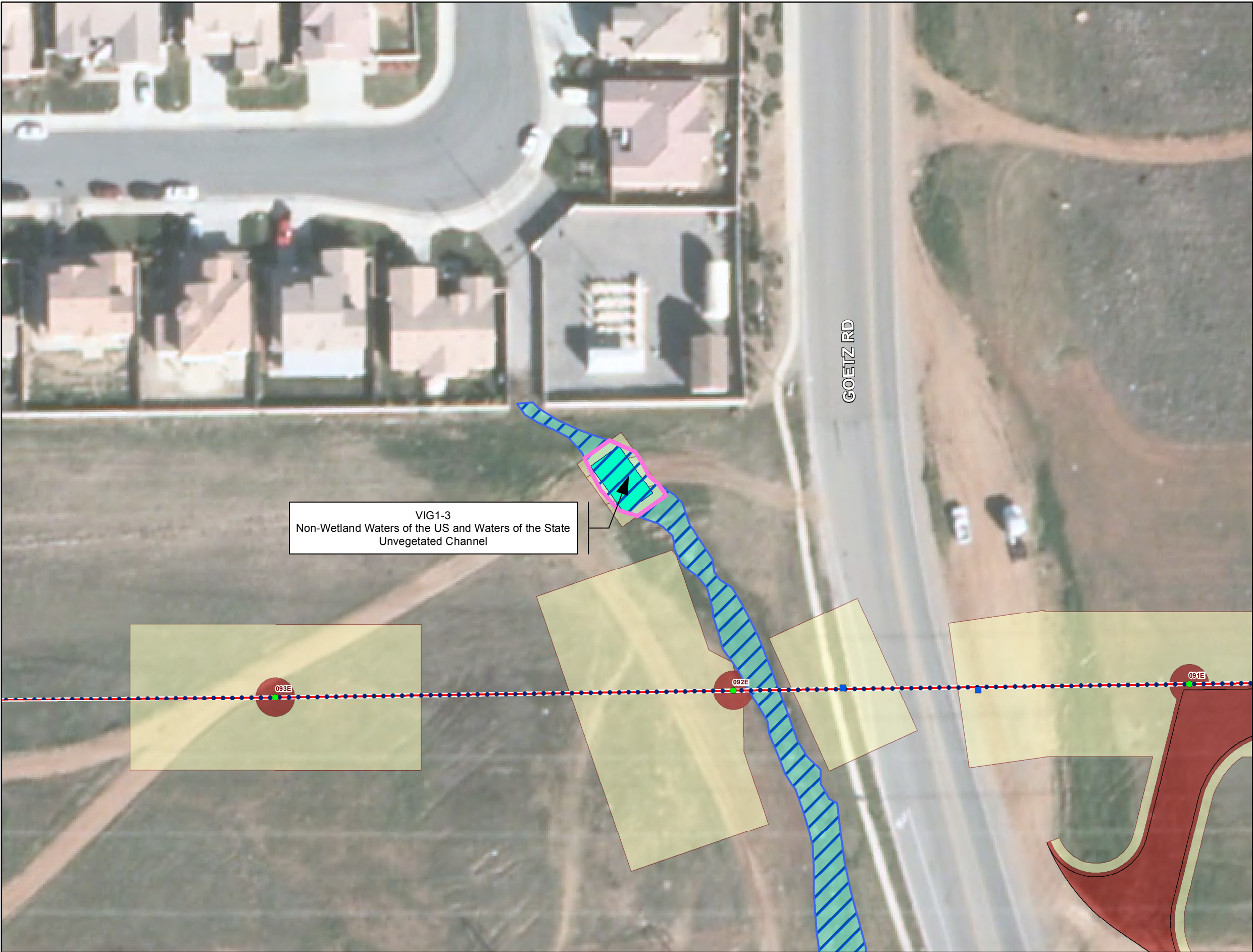
**for the Valley-Ivyglen Subtransmission Line Project**

**Phase 1**

**Riverside County, California**

**Map 1**





VIG1-3  
Non-Wetland Waters of the US and Waters of the State  
Unvegetated Channel

**Legend**

**Project Features\***

**Pole Type**

Guy

 LWSP**Subtransmission Route****Fiber Optic Line****Drainage Control Features (90%)****Impact Areas\*****MSCHP Riverine/Riparian Areas****Potential Jurisdictional Waters (AMEC)**

\* Map Notes:

- Project Features subject to change based on geotechnical investigations, final engineering, ongoing coordination with the resource agencies, and field assessments conducted prior to construction

- Map Current as of 10/9/2014

amec

1 inch = 50 feet

0

25

50

Feet

Appendix A2 - Proposed Impacts to  
Riverine/Riparian Areas  
MSHCP Biological Resources Technical Report  
for the Valley-Ivyglen Subtransmission Line Project  
Phase 1  
Riverside County, California

Map 2

Path: Q:\NaturalResources\SCE\_ValleyIvyglen\mxd\2014\ReportsAndSubmissions\BTR\Phase1\ProposedImpactsToRiverineRiparian\_Phase1.mxd, aaron.johnson, 10/9/2014





**Legend**

**Project Features\***

**Pole Type**

- Guy
- LWSP
- Riser
- TSP
- Guard Structures
- Access Roads
- Material Yards

**Subtransmission Route**

- Segment 1
- Segment 2
- Segment 3

**Fiber Optic Line**

- Overhead Fiber Optic Cable
- Underground Fiber Optic in Existing Conduit
- Underground Fiber Optic in New Conduit

**Drainage Control Features (90%)**

- Culvert
- Gabion
- Rip-Rap

**Impact Areas\***

- Permanent
- Temporary
- Tree Trimming Areas
- Impacted Jurisdictional Features

**MSCHP Riverine/Riparian Areas**


- Riparian
- Riverine
- Vernal Pool

**Potential Jurisdictional Waters (AMEC)**

- Waters of the U.S. and Waters of the State of California
- Wetland
- Existing Culvert



\* Map Notes:  
- Project Features subject to change based on geotechnical investigations, final engineering, ongoing coordination with the resource agencies, and field assessments conducted prior to construction  
- Map Current as of 10/9/2014



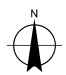
1 inch = 50 feet

0

25

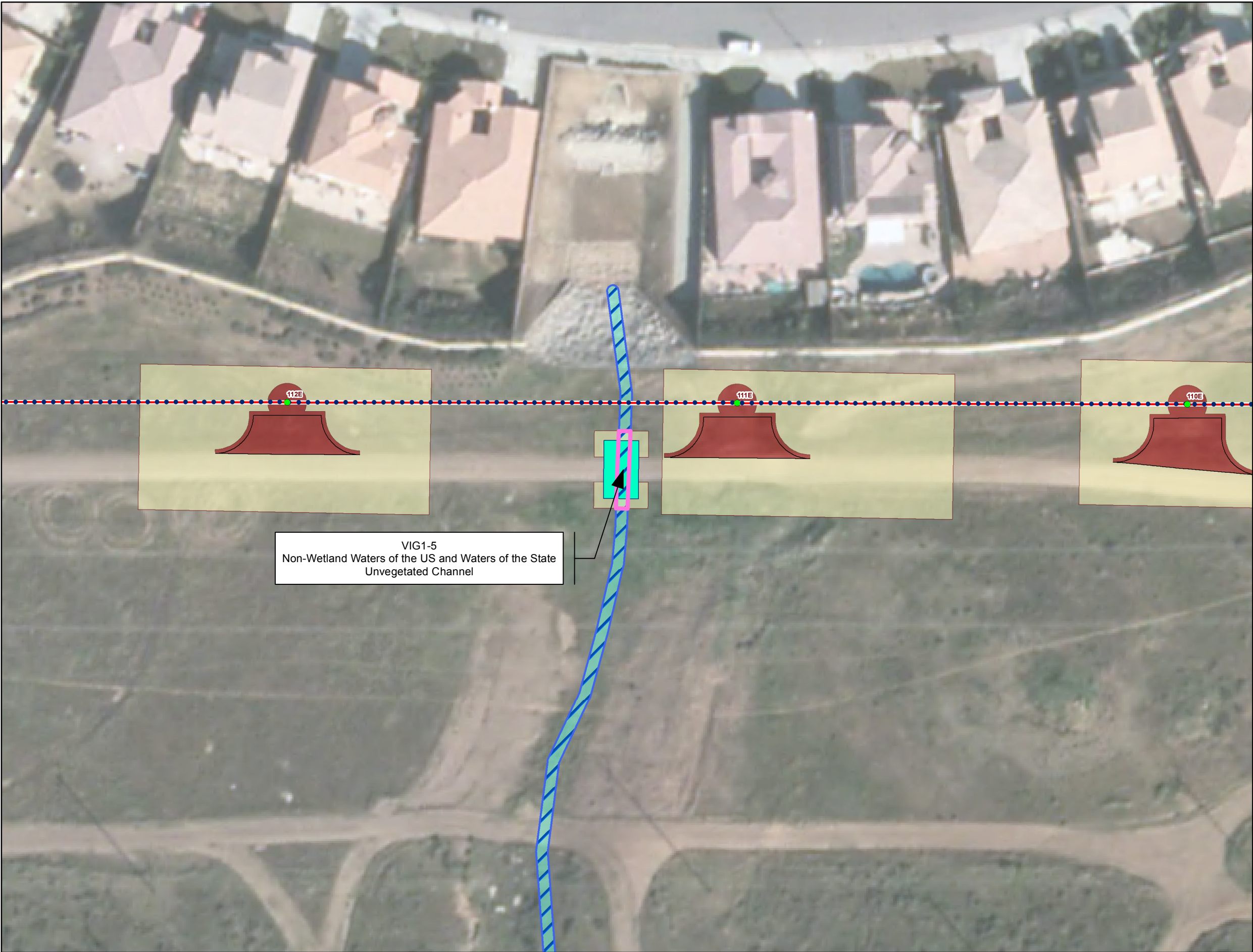
50

Feet



Appendix A2 - Proposed Impacts to Riverine/Riparian Areas  
MSHCP Biological Resources Technical Report  
for the Valley-Ivyglen Subtransmission Line Project  
Phase 1  
Riverside County, California





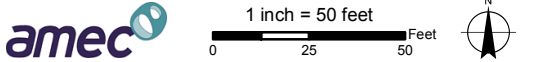
VIG1-5  
Non-Wetland Waters of the US and Waters of the State  
Unvegetated Channel

Legend

- Project Features\***
- Pole Type**
- Guy
  - LWSP
  - Riser
  - TSP
  - Guard Structures
  - Access Roads
  - Material Yards
- Subtransmission Route**
- Segment 1
  - Segment 2
  - Segment 3
- Fiber Optic Line**
- Overhead Fiber Optic Cable
  - Underground Fiber Optic in Existing Conduit
  - Underground Fiber Optic in New Conduit
- Drainage Control Features (90%)**
- Culvert
  - Gabion
  - Rip-Rap
- Impact Areas\***
- Permanent
  - Temporary
  - Tree Trimming Areas
  - Impacted Jurisdictional Features
- MSCHP Riverine/Riparian Areas**
- Riparian
  - Riverine
  - Vernal Pool
- Potential Jurisdictional Waters (AMEC)**
- Waters of the U.S. and Waters of the State of California
  - Wetland
  - Existing Culvert

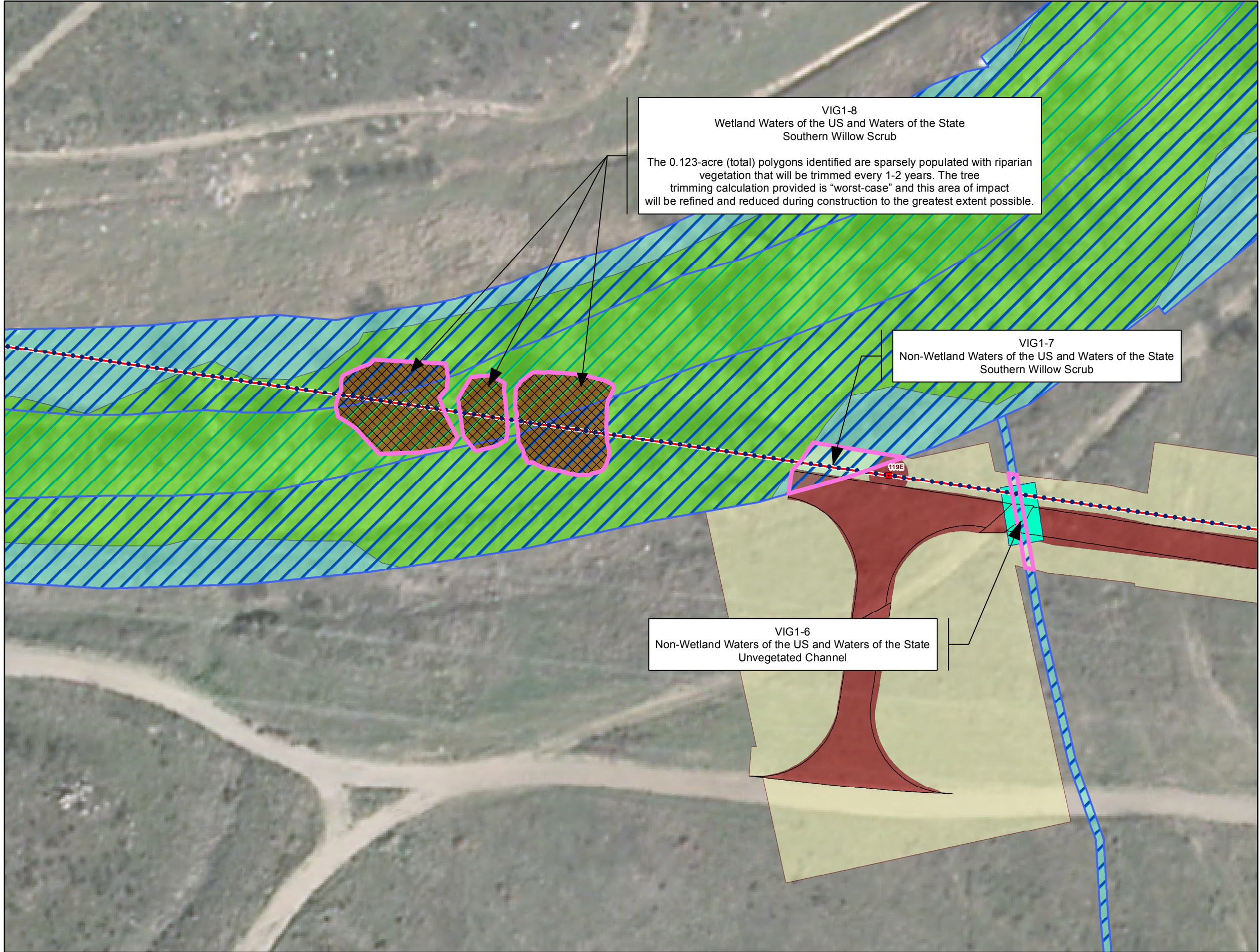


\* Map Notes:  
- Project Features subject to change based on geotechnical investigations, final engineering, ongoing coordination with the resource agencies, and field assessments conducted prior to construction  
- Map Current as of 10/9/2014



Appendix A2 - Proposed Impacts to  
Riverine/Riparian Areas  
MSHCP Biological Resources Technical Report  
for the Valley-Ivyglen Subtransmission Line Project  
Phase 1  
Riverside County, California





### Legend

**Project Features\***

**Pole Type**

- Guy
- LWSP
- Riser
- TSP
- Guard Structures
- Access Roads
- Material Yards

**Subtransmission Route**

- Segment 1
- Segment 2
- Segment 3

**Fiber Optic Line**

- Overhead Fiber Optic Cable
- Underground Fiber Optic in Existing Conduit
- Underground Fiber Optic in New Conduit

**Drainage Control Features (90%)**

- Culvert
- Gabion
- Rip-Rap

**Impact Areas\***

- Permanent
- Temporary
- Tree Trimming Areas
- Impacted Jurisdictional Features

**MSCHP Riverine/Riparian Areas**

- Riparian
- Riverine
- Vernal Pool

**Potential Jurisdictional Waters (AMEC)**

- Waters of the U.S. and Waters of the State of California
- Wetland
- Existing Culvert

**\* Map Notes:**

- Project Features subject to change based on geotechnical investigations, final engineering, ongoing coordination with the resource agencies, and field assessments conducted prior to construction
- Map Current as of 10/9/2014

**amec**

1 inch = 50 feet

0 25 50 Feet

**Appendix A2 - Proposed Impacts to Riverine/Riparian Areas**

**MSHCP Biological Resources Technical Report**

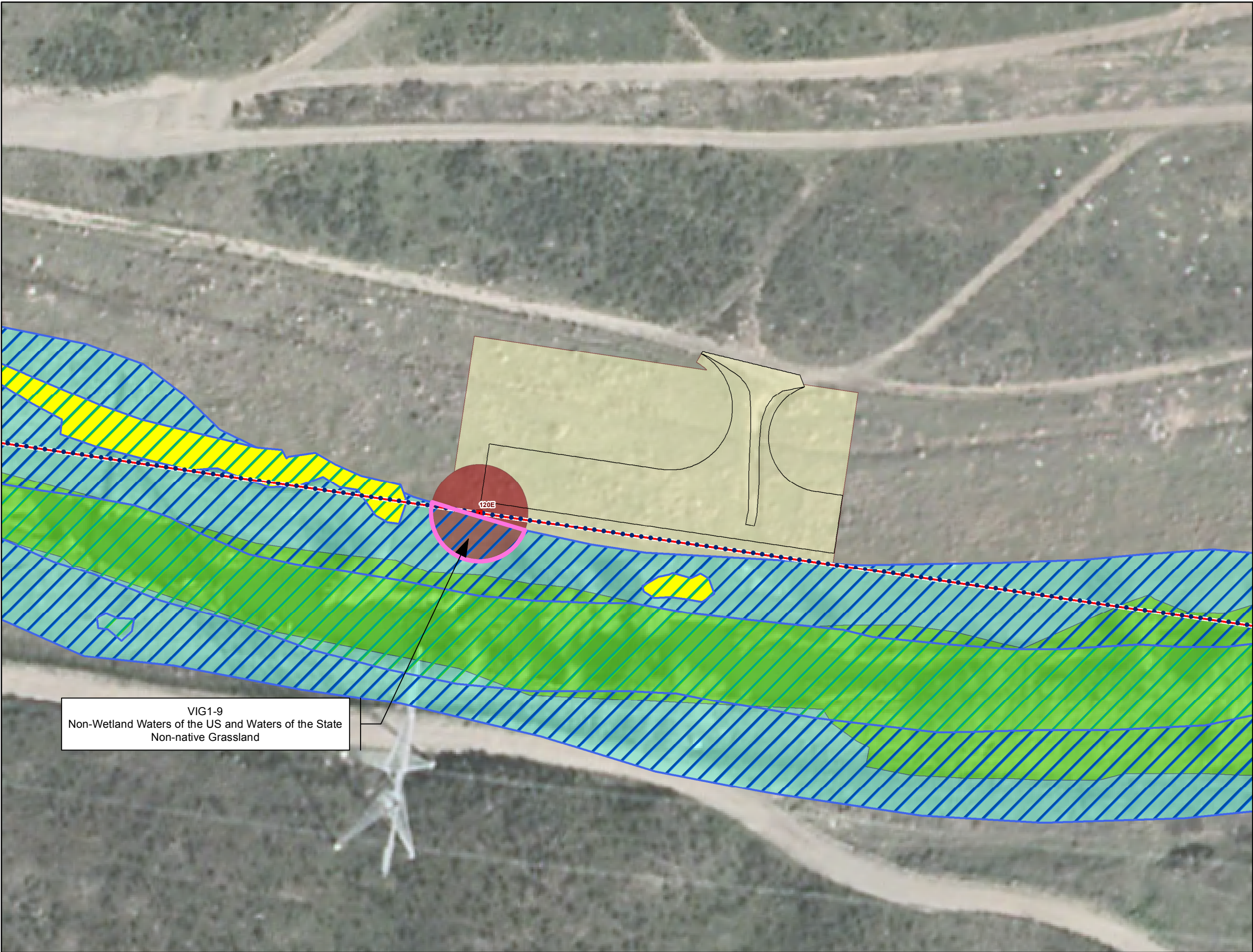
**for the Valley-Ivyglen Subtransmission Line Project**

**Phase 1**

**Riverside County, California**

**Map 5**





VIG1-9  
Non-Wetland Waters of the US and Waters of the State  
Non-native Grassland

### Legend

**Project Features\***

**Pole Type**

- Guy
- LWSP
- Riser
- TSP
- Guard Structures
- Access Roads
- Material Yards

**Subtransmission Route**

- Segment 1
- Segment 2
- Segment 3

**Fiber Optic Line**

- Overhead Fiber Optic Cable
- Underground Fiber Optic in Existing Conduit
- Underground Fiber Optic in New Conduit

**Drainage Control Features (90%)**

- Culvert
- Gabion
- Rip-Rap

**Impact Areas\***

- Permanent
- Temporary
- Tree Trimming Areas
- Impacted Jurisdictional Features

**MSCHP Riverine/Riparian Areas**

- Riparian
- Riverine
- Vernal Pool

**Potential Jurisdictional Waters (AMEC)**

- Waters of the U.S. and Waters of the State of California
- Wetland
- Existing Culvert

**\* Map Notes:**

- Project Features subject to change based on geotechnical investigations, final engineering, ongoing coordination with the resource agencies, and field assessments conducted prior to construction
- Map Current as of 10/9/2014

**amec**

1 inch = 50 feet

0 25 50 Feet

N

**Appendix A2 - Proposed Impacts to Riverine/Riparian Areas**

**MSHCP Biological Resources Technical Report**

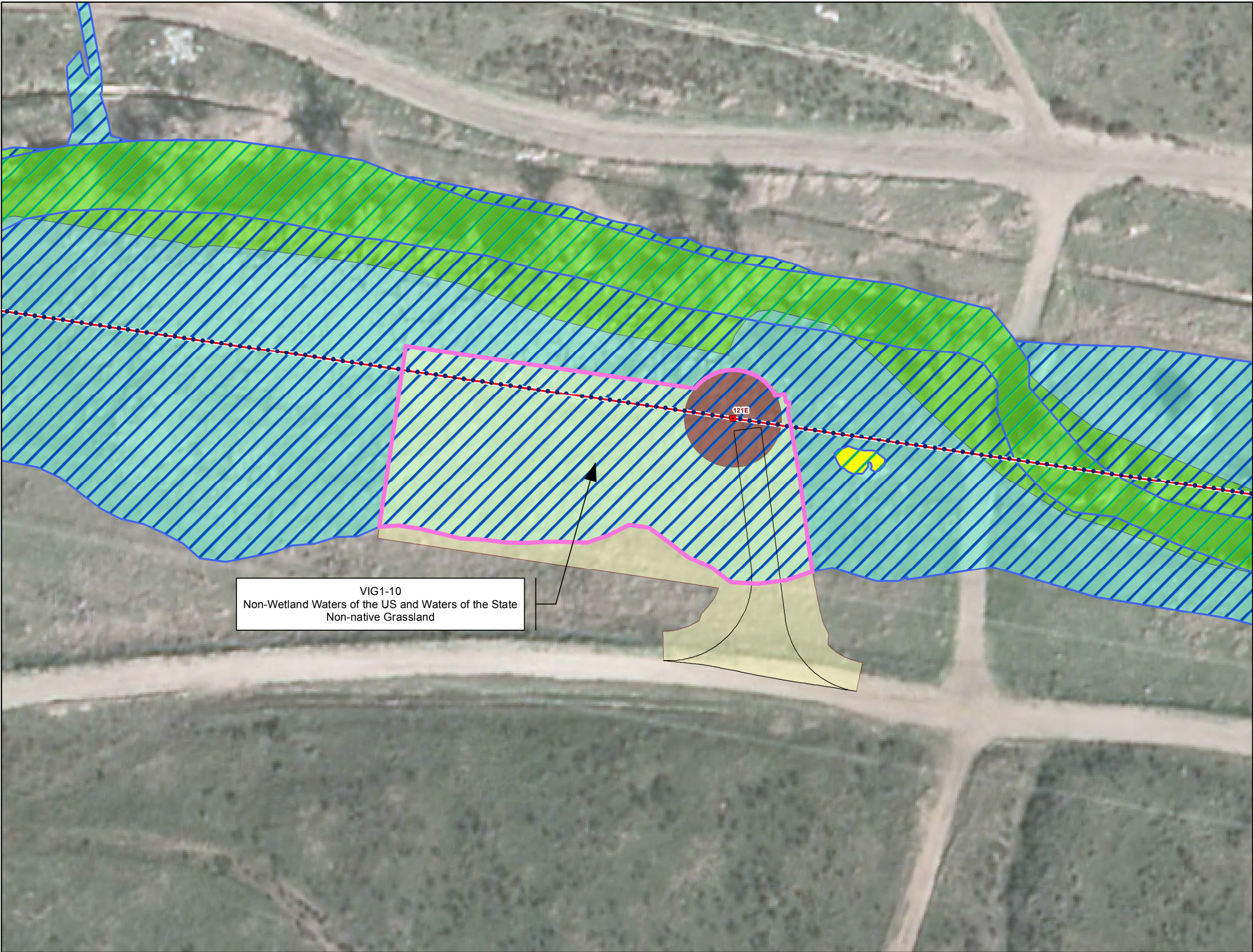
**for the Valley-Ivyglen Subtransmission Line Project**

**Phase 1**

**Riverside County, California**

**Map 6**





VIG1-10  
Non-Wetland Waters of the US and Waters of the State  
Non-native Grassland

Legend

- Project Features\***
- Pole Type**
- Guy
  - LWSP
  - Riser
  - TSP
  - Guard Structures
  - Access Roads
  - Material Yards
- Subtransmission Route**
- Segment 1
  - Segment 2
  - Segment 3
- Fiber Optic Line**
- Overhead Fiber Optic Cable
  - Underground Fiber Optic in Existing Conduit
  - Underground Fiber Optic in New Conduit
- Drainage Control Features (90%)**
- Culvert
  - Gabion
  - Rip-Rap
- Impact Areas\***
- Permanent
  - Temporary
  - Tree Trimming Areas
  - Impacted Jurisdictional Features
- MSCHP Riverine/Riparian Areas**
- Riparian
  - Riverine
  - Vernal Pool
- Potential Jurisdictional Waters (AMEC)**
- Waters of the U.S. and Waters of the State of California
  - Wetland
  - Existing Culvert



\* Map Notes:  
- Project Features subject to change based on geotechnical investigations, final engineering, ongoing coordination with the resource agencies, and field assessments conducted prior to construction  
- Map Current as of 10/9/2014

amec

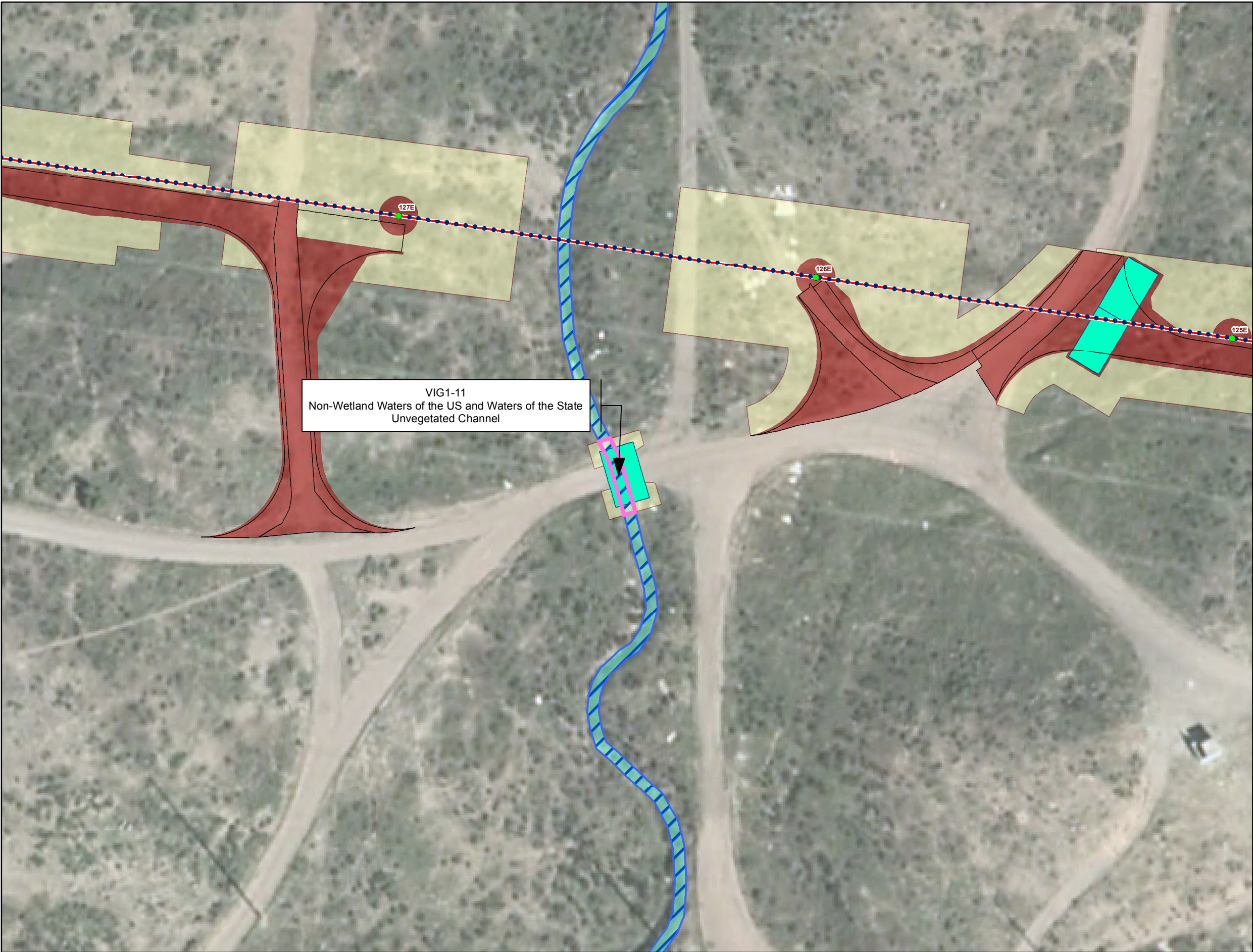
1 inch = 50 feet

0 25 50 Feet

N

Appendix A2 - Proposed Impacts to  
Riverine/Riparian Areas  
MSHCP Biological Resources Technical Report  
for the Valley-Ivyglen Subtransmission Line Project  
Phase 1  
Riverside County, California





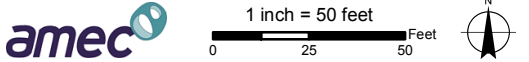
VIG1-11  
Non-Wetland Waters of the US and Waters of the State  
Unvegetated Channel

Legend

- Project Features\***
- Pole Type**
- Guy
  - LWSP
  - Riser
  - TSP
  - Guard Structures
  - Access Roads
  - Material Yards
- Subtransmission Route**
- Segment 1
  - Segment 2
  - Segment 3
- Fiber Optic Line**
- Overhead Fiber Optic Cable
  - Underground Fiber Optic in Existing Conduit
  - Underground Fiber Optic in New Conduit
- Drainage Control Features (90%)**
- Culvert
  - Gabion
  - Rip-Rap
- Impact Areas\***
- Permanent
  - Temporary
  - Tree Trimming Areas
  - Impacted Jurisdictional Features
- MSCHP Riverine/Riparian Areas**
- Riparian
  - Riverine
  - Vernal Pool
- Potential Jurisdictional Waters (AMEC)**
- Waters of the U.S. and Waters of the State of California
  - Wetland
  - Existing Culvert

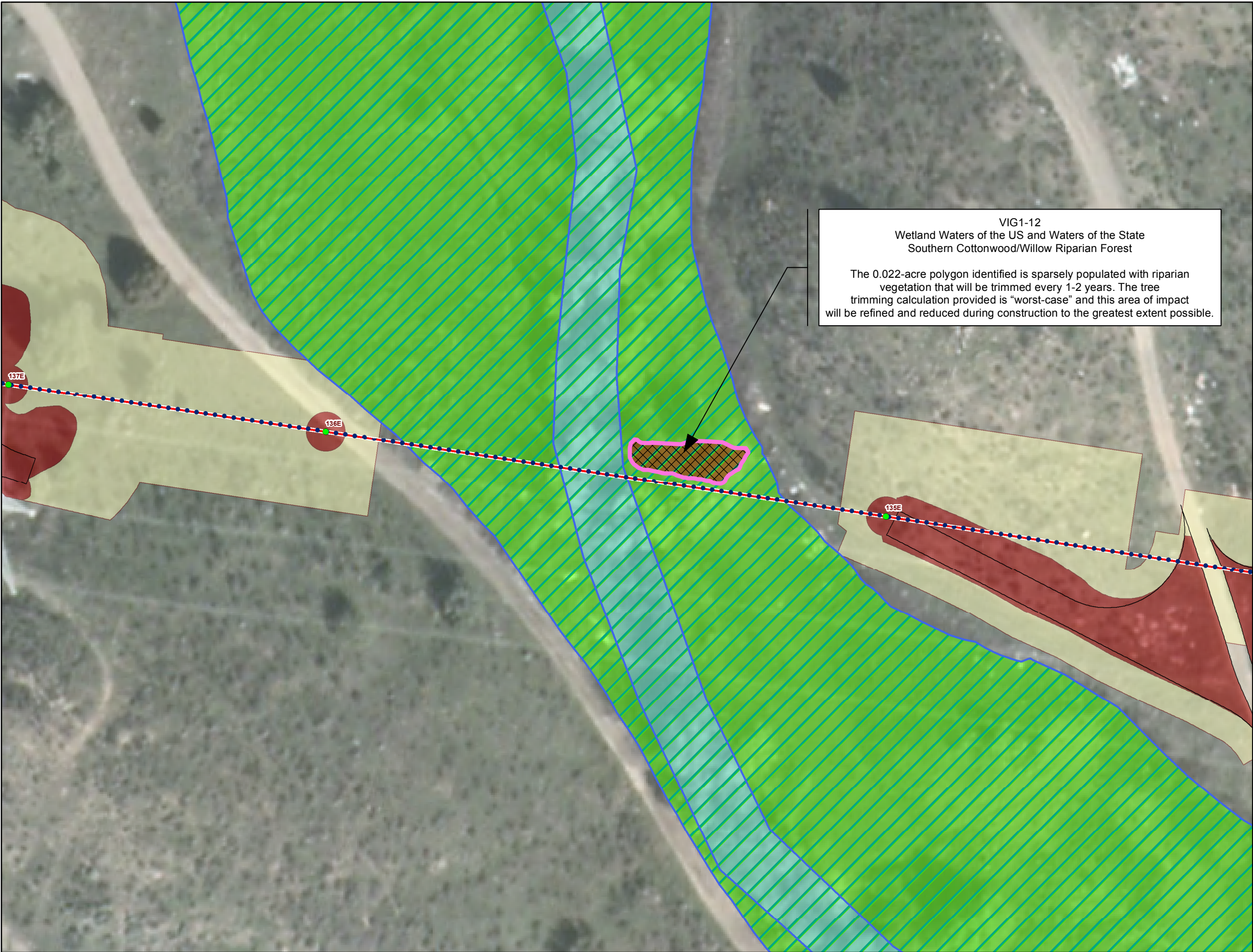


\* Map Notes:  
- Project Features subject to change based on geotechnical investigations, final engineering, ongoing coordination with the resource agencies, and field assessments conducted prior to construction  
- Map Current as of 10/9/2014



Appendix A2 - Proposed Impacts to  
Riverine/Riparian Areas  
MSHCP Biological Resources Technical Report  
for the Valley-Ivyglen Subtransmission Line Project  
Phase 1  
Riverside County, California





### Legend

**Project Features\***

**Pole Type**

- Guy
- LWSP
- Riser
- TSP
- Guard Structures
- Access Roads
- Material Yards

**Subtransmission Route**

- Segment 1
- Segment 2
- Segment 3

**Fiber Optic Line**

- Overhead Fiber Optic Cable
- Underground Fiber Optic in Existing Conduit
- Underground Fiber Optic in New Conduit

**Drainage Control Features (90%)**

- Culvert
- Gabion
- Rip-Rap

**Impact Areas\***

- Permanent
- Temporary
- Tree Trimming Areas
- Impacted Jurisdictional Features

**MSCHP Riverine/Riparian Areas**

- Riparian
- Riverine
- Vernal Pool

**Potential Jurisdictional Waters (AMEC)**

- Waters of the U.S. and Waters of the State of California
- Wetland
- Existing Culvert

**\* Map Notes:**

- Project Features subject to change based on geotechnical investigations, final engineering, ongoing coordination with the resource agencies, and field assessments conducted prior to construction
- Map Current as of 10/9/2014

**amec**

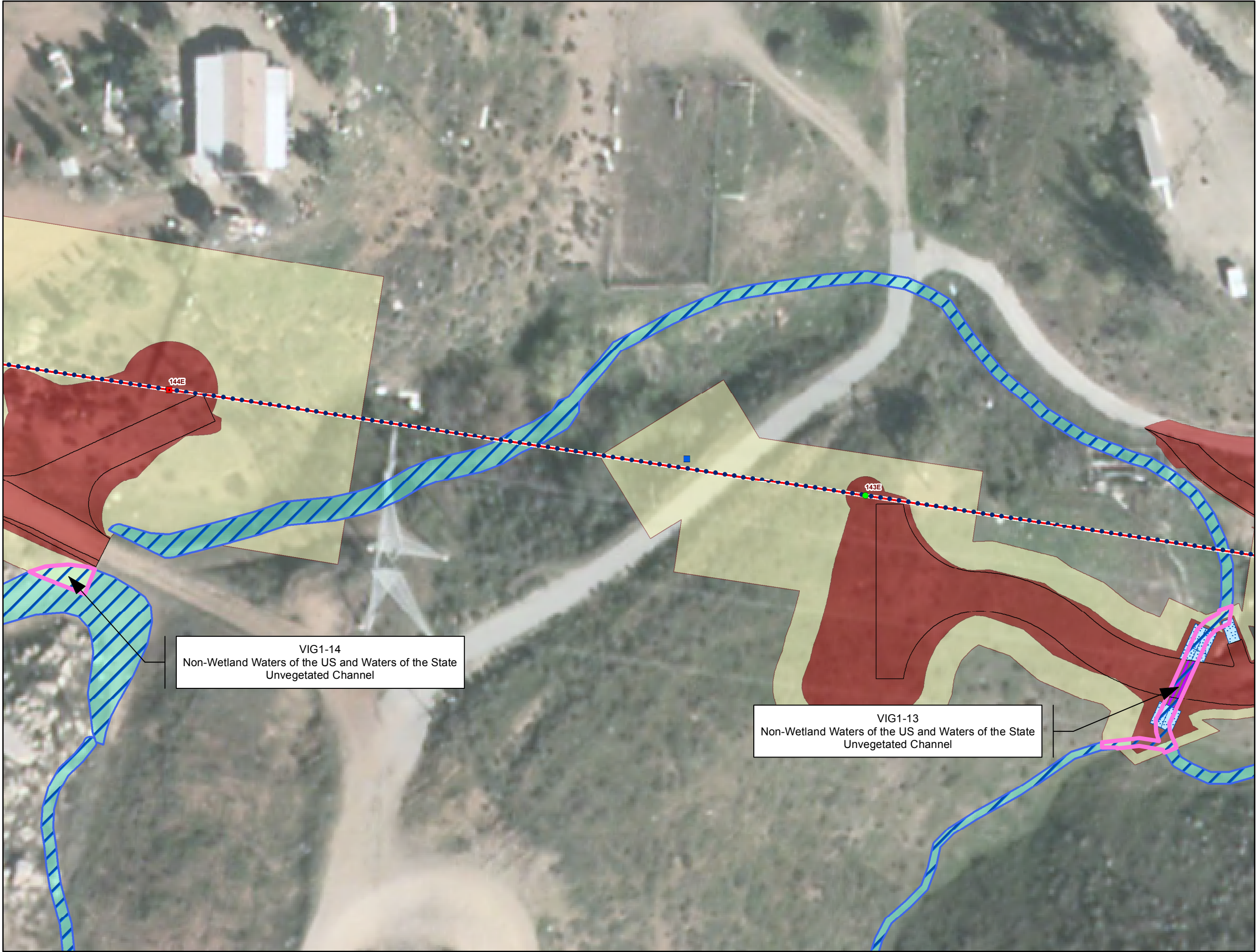
1 inch = 50 feet

0 25 50 Feet

**Appendix A2 - Proposed Impacts to Riverine/Riparian Areas**  
**MSHCP Biological Resources Technical Report**  
**for the Valley-Ivyglen Subtransmission Line Project**  
**Phase 1**  
**Riverside County, California**

**Map 9**





### Legend

**Project Features\***

**Pole Type**

- Guy
- LWSP
- Riser
- TSP
- Guard Structures

Access Roads

Material Yards

**Subtransmission Route**

- Segment 1
- Segment 2
- Segment 3

**Fiber Optic Line**

- Overhead Fiber Optic Cable
- Underground Fiber Optic in Existing Conduit
- Underground Fiber Optic in New Conduit

**Drainage Control Features (90%)**

- Culvert
- Gabion
- Rip-Rap

**Impact Areas\***

- Permanent
- Temporary
- Tree Trimming Areas
- Impacted Jurisdictional Features

**MSCHP Riverine/Riparian Areas**

- Riparian
- Riverine
- Vernal Pool

**Potential Jurisdictional Waters (AMEC)**

- Waters of the U.S. and Waters of the State of California
- Wetland
- Existing Culvert

**\* Map Notes:**

- Project Features subject to change based on geotechnical investigations, final engineering, ongoing coordination with the resource agencies, and field assessments conducted prior to construction
- Map Current as of 10/9/2014

**amec**

1 inch = 50 feet

0 25 50 Feet

N

**Appendix A2 - Proposed Impacts to Riverine/Riparian Areas**

**MSHCP Biological Resources Technical Report**

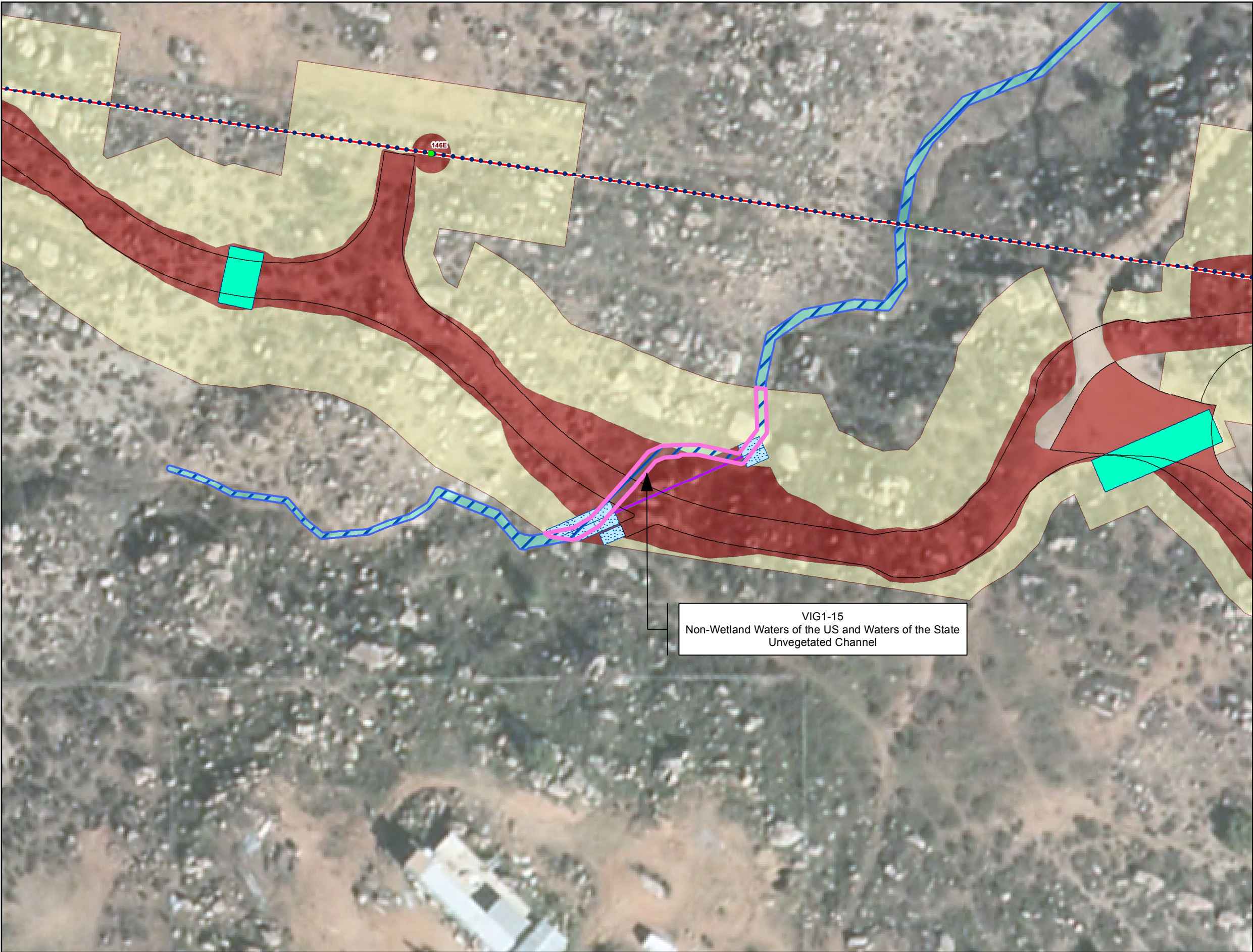
**for the Valley-Ivyglen Subtransmission Line Project**

**Phase 1**

**Riverside County, California**

**Map 10**





### Legend

**Project Features\***

**Pole Type**

- Guy
- LWSP
- Riser
- TSP
- Guard Structures

Access Roads

Material Yards

**Subtransmission Route**

- Segment 1
- Segment 2
- Segment 3

**Fiber Optic Line**

- Overhead Fiber Optic Cable
- Underground Fiber Optic in Existing Conduit
- Underground Fiber Optic in New Conduit

**Drainage Control Features (90%)**

- Culvert
- Gabion
- Rip-Rap

**Impact Areas\***

- Permanent
- Temporary
- Tree Trimming Areas
- Impacted Jurisdictional Features

**MSCHP Riverine/Riparian Areas**

- Riparian
- Riverine
- Vernal Pool

**Potential Jurisdictional Waters (AMEC)**

- Waters of the U.S. and Waters of the State of California
- Wetland
- Existing Culvert

**\* Map Notes:**

- Project Features subject to change based on geotechnical investigations, final engineering, ongoing coordination with the resource agencies, and field assessments conducted prior to construction
- Map Current as of 10/9/2014

**amec**

1 inch = 50 feet

0 25 50 Feet

N

**Appendix A2 - Proposed Impacts to Riverine/Riparian Areas**

**MSHCP Biological Resources Technical Report**

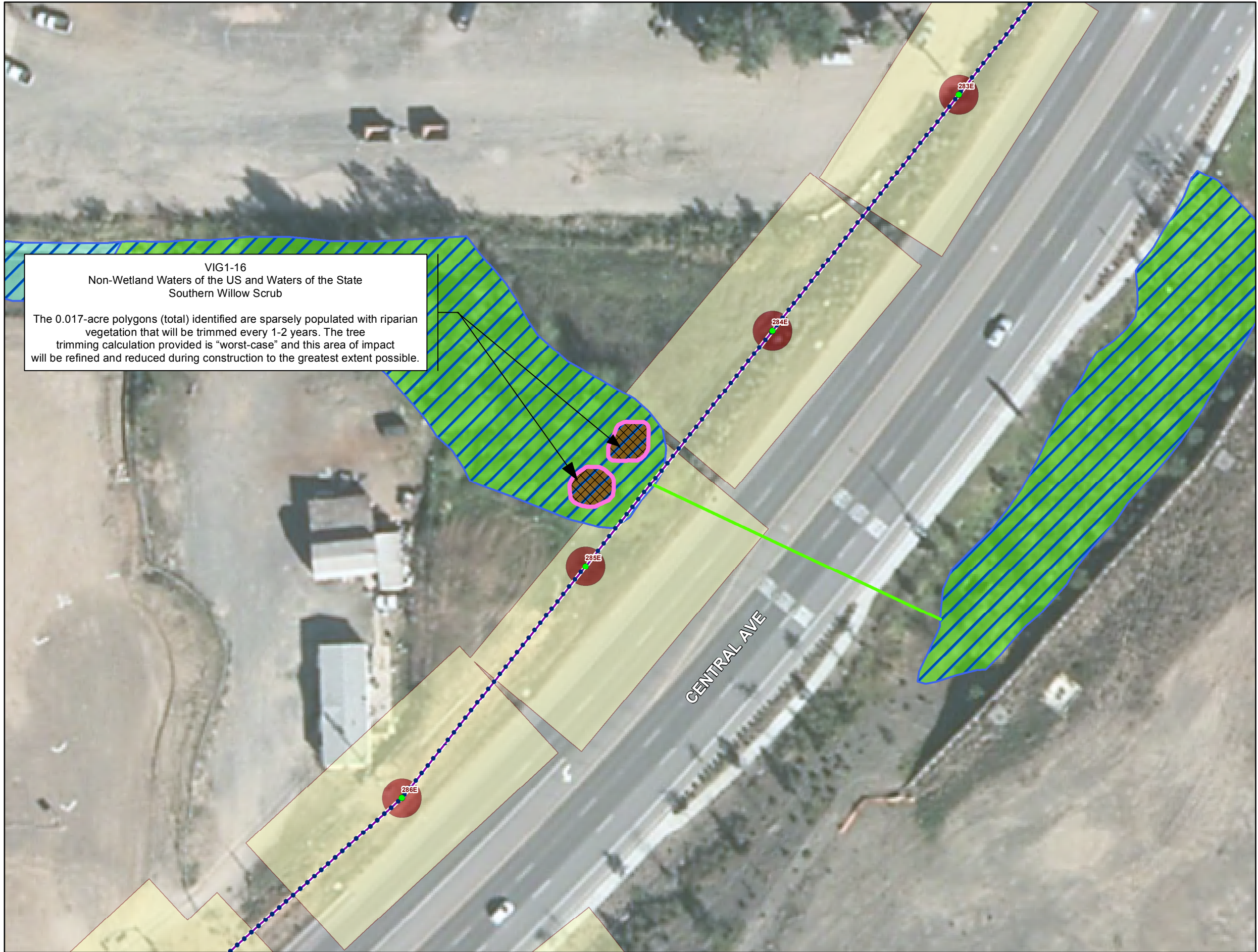
**for the Valley-Ivyglen Subtransmission Line Project**

**Phase 1**

**Riverside County, California**

**Map 11**





VIG1-16  
Non-Wetland Waters of the US and Waters of the State  
Southern Willow Scrub

The 0.017-acre polygons (total) identified are sparsely populated with riparian vegetation that will be trimmed every 1-2 years. The tree trimming calculation provided is "worst-case" and this area of impact will be refined and reduced during construction to the greatest extent possible.

### Legend

**Project Features\***

**Pole Type**

- Guy
- LWSP
- Riser
- TSP
- Guard Structures
- Access Roads
- Material Yards

**Subtransmission Route**

- Segment 1
- Segment 2
- Segment 3

**Fiber Optic Line**

- Overhead Fiber Optic Cable
- Underground Fiber Optic in Existing Conduit
- Underground Fiber Optic in New Conduit

**Drainage Control Features (90%)**

- Culvert
- Gabion
- Rip-Rap

**Impact Areas\***

- Permanent
- Temporary
- Tree Trimming Areas
- Impacted Jurisdictional Features

**MSCHP Riverine/Riparian Areas**

- Riparian
- Riverine
- Vernal Pool

**Potential Jurisdictional Waters (AMEC)**

- Waters of the U.S. and Waters of the State of California
- Wetland
- Existing Culvert

**\* Map Notes:**

- Project Features subject to change based on geotechnical investigations, final engineering, ongoing coordination with the resource agencies, and field assessments conducted prior to construction
- Map Current as of 10/9/2014

**amec**

1 inch = 50 feet

0 25 50 Feet

N

**Appendix A2 - Proposed Impacts to Riverine/Riparian Areas**  
**MSHCP Biological Resources Technical Report**  
**for the Valley-Ivyglen Subtransmission Line Project**  
**Phase 1**  
**Riverside County, California**

**Map 12**